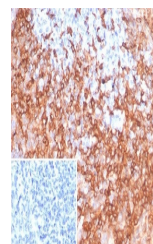


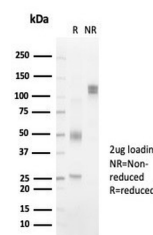
Product Datasheet

HLA-DRB Antibody (orb1823225)

Description	This mAb reacts with a 28kDa chain of HLA-DRB1 antigen, a member of MHC class II molecules. It does ...
Species/Host	Rabbit
Reactivity	Human
Conjugation	Unconjugated
Tested Applications	IHC-P
Immunogen	Recombinant full-length human HLA-DRB1 protein was used as the immunogen for the HLA-DRB antibody.
Storage	Aliquot the HLA-DRB antibody and store frozen at -20°C or colder. Avoid repeated freeze-thaw cycles.
Note	For research use only
Formula	1 mg/ml in 1X PBS; BSA free, sodium azide free
Isotype	Rabbit IgG, kappa
Clonality	Recombinant
Uniprot ID	P01911
Hazard Information	This HLA-DRB antibody is available for research use only.
Dilution Range	Immunohistochemistry (FFPE): 1-2ug/ml for 30 min at RT
Expiration Date	12 months from date of receipt.



IHC staining of FFPE human tonsil tissue...



SDS-PAGE analysis of purified, BSA-free ...