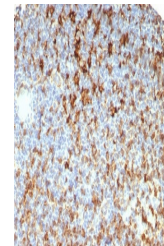


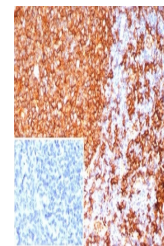
Product Datasheet

HLA-DRB Antibody (orb1823221)

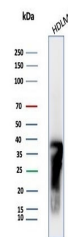
Description	This mAb reacts with a 28kDa chain of HLA-DRB1 antigen, a member of MHC class II molecules. It does ...
Species/Host	Rabbit
Reactivity	Human
Conjugation	Unconjugated
Tested Applications	IHC-P, WB
Immunogen	Recombinant full-length human HLA-DRB1 protein was used as the immunogen for the HLA-DRB antibody.
Storage	Aliquot the HLA-DRB antibody and store frozen at -20°C or colder. Avoid repeated freeze-thaw cycles.
Note	For research use only
Formula	0.2 mg/ml in 1X PBS with 0.1 mg/ml BSA (US sourced), 0.05% sodium azide
Isotype	Rabbit IgG, kappa
Clonality	Recombinant
Uniprot ID	P01911
Hazard Information	This HLA-DRB antibody is available for research use only.
Dilution Range	Western blot: 1-2ug/ml, Immunohistochemistry (FFPE): 1-2ug/ml for 30 min at RT
Expiration Date	12 months from date of receipt.



IHC staining of FFPE human lymph node ti...



IHC staining of FFPE human tonsil tissue...



Western blot testing of human HDLM-2 cel...