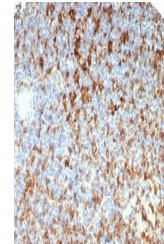


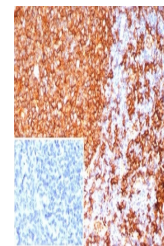
## Product Datasheet

### HLA-DRB Antibody (orb1823220)

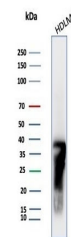
<b>Description</b>	This mAb reacts with a 28kDa chain of HLA-DRB1 antigen, a member of MHC class II molecules. It does ...
<b>Species/Host</b>	Rabbit
<b>Reactivity</b>	Human
<b>Conjugation</b>	Unconjugated
<b>Tested Applications</b>	IHC-P, WB
<b>Immunogen</b>	Recombinant full-length human HLA-DRB1 protein was used as the immunogen for the HLA-DRB antibody.
<b>Storage</b>	Aliquot the HLA-DRB antibody and store frozen at -20°C or colder. Avoid repeated freeze-thaw cycles.
<b>Note</b>	For research use only
<b>Formula</b>	0.2 mg/ml in 1X PBS with 0.1 mg/ml BSA (US sourced), 0.05% sodium azide
<b>Isotype</b>	Rabbit IgG, kappa
<b>Clonality</b>	Recombinant
<b>Uniprot ID</b>	<b>P01911</b>
<b>Hazard Information</b>	This HLA-DRB antibody is available for research use only.
<b>Dilution Range</b>	Western blot: 1-2ug/ml, Immunohistochemistry (FFPE): 1-2ug/ml for 30 min at RT
<b>Expiration Date</b>	12 months from date of receipt.



IHC staining of FFPE human lymph node ti...



IHC staining of FFPE human tonsil tissue...



Western blot testing of human HDLM-2 cel...