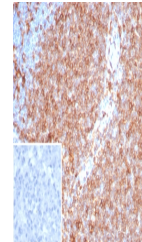


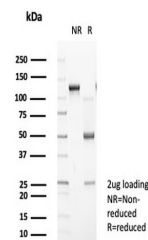
Product Datasheet

Pan-HLA Antibody MHC II (DP/DQ/DR) (orb1823200)

Description	Reacts with a common epitope of human major histocompatibility (MHC) class II antigens, HLA-DP, -DQ ...
Species/Host	Rabbit
Reactivity	Human
Conjugation	Unconjugated
Tested Applications	IHC-P
Immunogen	Priess cells (a human B cell line) were used as the immunogen for the Pan-HLA-II antibody.
Storage	Aliquot the Pan-HLA-II antibody and store frozen at -20°C or colder. Avoid repeated freeze-thaw cycles.
Note	For research use only
Formula	0.2 mg/ml in 1X PBS with 0.1 mg/ml BSA (US sourced), 0.05% sodium azide
Isotype	Rabbit IgG, kappa
Clonality	Recombinant
Uniprot ID	P04440, P01908, P01920, P01909, P01903
Hazard Information	This Pan-HLA-II antibody is available for research use only.
Dilution Range	Immunohistochemistry (FFPE): 1-2ug/ml for 30 min at RT
Expiration Date	12 months from date of receipt.



IHC staining of FFPE human tonsil tissue...



SDS-PAGE analysis of purified, BSA-free ...