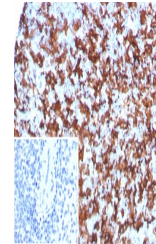


Product Datasheet

IBA1 Antibody / AIF-1 (orb1823157)

Description	AIF1 is a cytoplasmic, calcium-binding protein that is thought to play a role in macrophage activati...
Species/Host	Rabbit
Reactivity	Human
Conjugation	Unconjugated
Tested Applications	IHC-P
Immunogen	A recombinant partial protein sequence (within amino acids 1-146) from the human protein was used as the immunogen for the Allograft inflammatory factor 1 antibody.
Storage	Aliquot the Allograft inflammatory factor 1 antibody and store frozen at -20°C or colder. Avoid repeated freeze-thaw cycles.
Note	For research use only
Formula	0.2 mg/ml in 1X PBS with 0.1 mg/ml BSA (US sourced), 0.05% sodium azide
Isotype	Rabbit IgG, kappa
Clonality	Recombinant
Uniprot ID	P55008
Hazard Information	This Allograft inflammatory factor 1 antibody is available for research use only.
Dilution Range	Immunohistochemistry (FFPE): 1-2ug/ml for 30 min at RT
Expiration Date	12 months from date of receipt.



IHC staining of FFPE human spleen tissue...