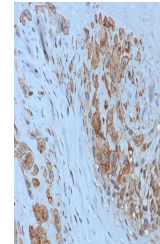


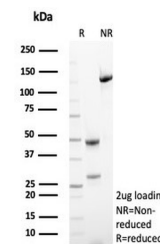
Product Datasheet

HLA-G Antibody (orb1823136)

Description	Major histocompatibility complex (MHC), human leukocyte antigen (HLA) molecules are cell-surface rec...
Species/Host	Rabbit
Reactivity	Human
Conjugation	Unconjugated
Tested Applications	IHC-P
Immunogen	Purified His-tagged HLA-G protein was used as the immunogen for the HLA-G antibody.
Storage	Aliquot the HLA-G antibody and store frozen at -20°C or colder. Avoid repeated freeze-thaw cycles.
Note	For research use only
Formula	0.2 mg/ml in 1X PBS with 0.1 mg/ml BSA (US sourced), 0.05% sodium azide
Isotype	Rabbit IgG, kappa
Clonality	Recombinant
Uniprot ID	P17693
Hazard Information	This HLA-G antibody is available for research use only.
Dilution Range	Immunohistochemistry (FFPE): 1-2ug/ml for 30 min at RT
Expiration Date	12 months from date of receipt.



IHC staining of FFPE human placental tis...



SDS-PAGE analysis of purified, BSA-free ...