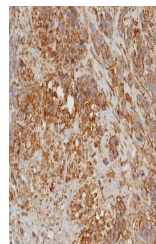


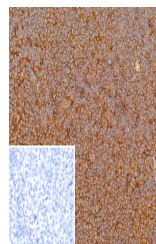
Product Datasheet

HLA-G Antibody (orb1823133)

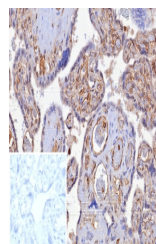
Description	Major histocompatibility complex (MHC), human leukocyte antigen (HLA) molecules are cell-surface rec...
Species/Host	Rabbit
Reactivity	Human
Conjugation	Unconjugated
Tested Applications	IHC-P
Immunogen	Purified His-tagged HLA-G protein was used as the immunogen for the HLA-G antibody.
Storage	Aliquot the HLA-G antibody and store frozen at -20°C or colder. Avoid repeated freeze-thaw cycles.
Note	For research use only
Formula	0.2 mg/ml in 1X PBS with 0.1 mg/ml BSA (US sourced), 0.05% sodium azide
Isotype	Rabbit IgG, kappa
Clonality	Recombinant
Uniprot ID	P17693
Hazard Information	This HLA-G antibody is available for research use only.
Dilution Range	Immunohistochemistry (FFPE): 1-2ug/ml for 30 min at RT
Expiration Date	12 months from date of receipt.



IHC staining of FFPE human bladder carcinoma tissue.



IHC staining of FFPE human tonsil tissue.



IHC staining of FFPE human placental tissue.