
Product Datasheet

**AP2 alpha Antibody / TFAP2A / Activator protein 2
(orb1823119)**

Description

TATA-box binding protein (TBP) interactions with


Species/Host

Mouse

Reactivity

Human

Conjugation

Unconjugated

Tested Applications

FACS, IHC-P

Immunogen

Recombinant full-length human TFAP2A protein was used as the immunogen for the TFAP2A antibody.

Storage

Aliquot the TFAP2A antibody and store frozen at -20°C or colder. Avoid repeated freeze-thaw cycles.

Note

For research use only

Formula

0.2 mg/ml in 1X PBS with 0.1 mg/ml BSA (US sourced), 0.05% sodium azide

Isotype

Mouse IgG2a

Clonality

Monoclonal

Uniprot ID
P05549
Hazard Information

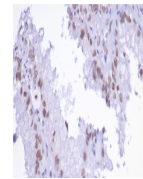
This TFAP2A antibody is available for research use only.

Dilution Range

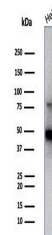
Flow cytometry: 1-2ug/million cells, Immunohistochemistry (FFPE): 1-2ug/ml for 30 min at RT

Expiration Date

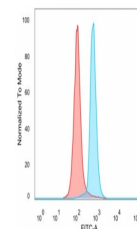
12 months from date of receipt.



IHC staining of FFPE human renal cell ca...



Western blot testing of human HeLa cell ...



Flow cytometry testing of PFA-fixed huma...