

---

## Product Datasheet

**AP2 alpha Antibody / TFAP2A / Activator protein 2  
(orb1823118)**

**Description**

TATA-box binding protein (TBP) interactions with


**Species/Host**

Mouse

**Reactivity**

Human

**Conjugation**

Unconjugated

**Tested Applications**

FACS, IHC-P

**Immunogen**

Recombinant full-length human TFAP2A protein was used as the immunogen for the TFAP2A antibody.

**Storage**

Aliquot the TFAP2A antibody and store frozen at -20°C or colder. Avoid repeated freeze-thaw cycles.

**Note**

For research use only

**Formula**

0.2 mg/ml in 1X PBS with 0.1 mg/ml BSA (US sourced), 0.05% sodium azide

**Isotype**

Mouse IgG2a

**Clonality**

Monoclonal

**Uniprot ID**
**P05549**
**Hazard Information**

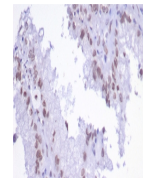
This TFAP2A antibody is available for research use only.

**Dilution Range**

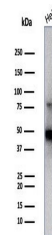
Flow cytometry: 1-2ug/million cells, Immunohistochemistry (FFPE): 1-2ug/ml for 30 min at RT

**Expiration Date**

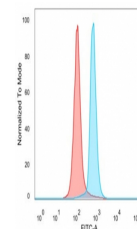
12 months from date of receipt.



IHC staining of FFPE human renal cell carcinoma...



Western blot testing of human HeLa cell...



Flow cytometry testing of PFA-fixed human...