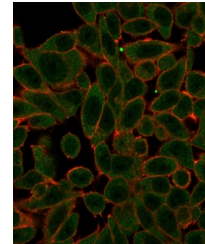


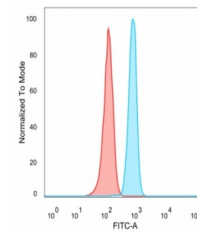
Product Datasheet

PRDM1 Antibody / BLIMP1 (orb1823083)

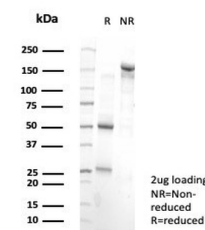
Description	The development and differentiation of plasma cells, which are terminally differentiated B-cells, ar...
Species/Host	Mouse
Reactivity	Human
Conjugation	Unconjugated
Tested Applications	FACS, IF
Immunogen	Recombinant full-length human protein was used as the immunogen for the BLIMP-1 antibody.
Storage	Aliquot the BLIMP-1 antibody and store frozen at -20°C or colder. Avoid repeated freeze-thaw cycles.
Note	For research use only
Formula	0.2 mg/ml in 1X PBS with 0.1 mg/ml BSA (US sourced), 0.05% sodium azide
Isotype	Mouse IgG2a
Clonality	Monoclonal
Uniprot ID	O75626
Hazard Information	This BLIMP-1 antibody is available for research use only.
Dilution Range	Flow cytometry: 1-2ug/million cells, Immunofluorescence: 1-2ug/ml
Expiration Date	12 months from date of receipt.



Immunofluorescent staining of PFA-fixed ...



Flow cytometry testing of PFA-fixed huma...



SDS-PAGE analysis of purified, BSA-free ...