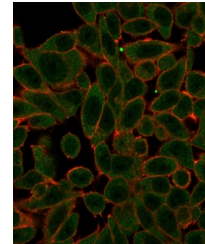


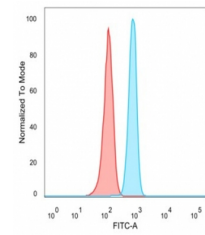
Product Datasheet

PRDM1 Antibody / BLIMP1 (orb1823081)

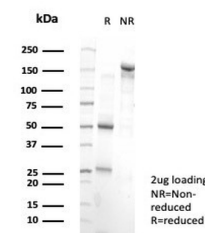
| | |
|----------------------------|---|
| Description | The development and differentiation of plasma cells, which are terminally differentiated B-cells, ar... |
| Species/Host | Mouse |
| Reactivity | Human |
| Conjugation | Unconjugated |
| Tested Applications | FACS, IF |
| Immunogen | Recombinant full-length human protein was used as the immunogen for the BLIMP-1 antibody. |
| Storage | Aliquot the BLIMP-1 antibody and store frozen at -20°C or colder. Avoid repeated freeze-thaw cycles. |
| Note | For research use only |
| Formula | 1 mg/ml in 1X PBS; BSA free, sodium azide free |
| Isotype | Mouse IgG2a |
| Clonality | Monoclonal |
| Uniprot ID | O75626 |
| Hazard Information | This BLIMP-1 antibody is available for research use only. |
| Dilution Range | Flow cytometry: 1-2ug/million cells, Immunofluorescence: 1-2ug/ml |
| Expiration Date | 12 months from date of receipt. |



Immunofluorescent staining of PFA-fixed ...



Flow cytometry testing of PFA-fixed huma...



SDS-PAGE analysis of purified, BSA-free ...