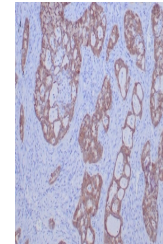


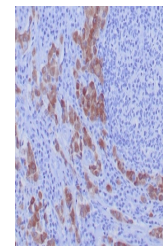
Product Datasheet

ROS1 Antibody (orb1823075)

Description	ROS1, an orphan receptor tyrosine kinase of the insulin receptor family, was initially identified as...
Species/Host	Rabbit
Reactivity	Human
Conjugation	Unconjugated
Tested Applications	IHC-P
Immunogen	A recombinant fragment corresponding to the cytoplasmic domain of human ROS1 protein was used as the immunogen for the ROS1 antibody.
Storage	Aliquot the ROS1 antibody and store frozen at -20°C or colder. Avoid repeated freeze-thaw cycles.
Note	For research use only
Formula	1 mg/ml in 1X PBS; BSA free, sodium azide free
Isotype	Rabbit IgG, kappa
Clonality	Recombinant
Uniprot ID	P08922
Hazard Information	This ROS1 antibody is available for research use only.
Dilution Range	Immunohistochemistry (FFPE): 1-2ug/ml for 30 min at RT
Expiration Date	12 months from date of receipt.



IHC staining of FFPE human lung carcinom...



IHC staining of FFPE human lung carcinom...