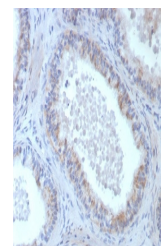


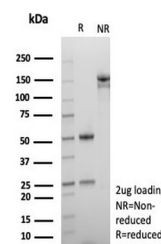
Product Datasheet

ROS1 Antibody (orb1823071)

Description	ROS1, an orphan receptor tyrosine kinase of the insulin receptor family, was initially identified as...
Species/Host	Rabbit
Reactivity	Human
Conjugation	Unconjugated
Tested Applications	IHC-P
Immunogen	A recombinant fragment corresponding to the cytoplasmic domain of human ROS1 protein was used as the immunogen for the ROS1 antibody.
Storage	Aliquot the ROS1 antibody and store frozen at -20°C or colder. Avoid repeated freeze-thaw cycles.
Note	For research use only
Formula	0.2 mg/ml in 1X PBS with 0.1 mg/ml BSA (US sourced), 0.05% sodium azide
Isotype	Rabbit IgG, kappa
Clonality	Recombinant
Uniprot ID	P08922
Hazard Information	This ROS1 antibody is available for research use only.
Dilution Range	Immunohistochemistry (FFPE): 1-2ug/ml for 30 min at RT
Expiration Date	12 months from date of receipt.



IHC staining of FFPE human epididymis ti...



SDS-PAGE analysis of purified, BSA-free ...