
Product Datasheet

**WT1-associated protein Antibody / WTAP
(orb1823037)**

Description

Wilms tumor (WT) is an embryonal malignancy of the



Species/Host

Mouse

Reactivity

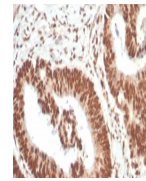
Human

Conjugation

Unconjugated

Tested Applications

FACS, IHC-P



IHC staining of FFPE human colon carcinoma...

Immunogen

Recombinant full-length human protein was used as the immunogen for the WT1-associated protein antibody.

Storage

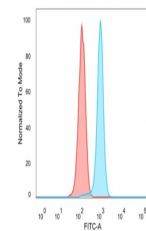
Aliquot the WT1-associated protein antibody and store frozen at -20°C or colder. Avoid repeated freeze-thaw cycles.

Note

For research use only

Formula

0.2 mg/ml in 1X PBS with 0.1 mg/ml BSA (US sourced), 0.05% sodium azide



Flow cytometry testing of PFA-fixed huma...

Isotype

Mouse IgG2b, kappa

Clonality

Monoclonal

Uniprot ID

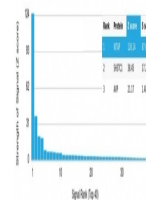
Q15007

Hazard Information

This WT1-associated protein antibody is available for research use only.

Dilution Range

Flow cytometry: 1-2ug/million cells, Immunohistochemistry (FFPE): 1-2ug/ml for 30 min at RT



Analysis of a HuProt (TM) microarray con...

Expiration Date

12 months from date of receipt.