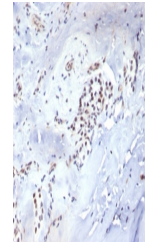


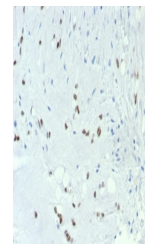
Product Datasheet

Brachyury Antibody / Protein T / TBXT (orb1823035)

Description	The T-box gene family consists of members that share a unique DNA binding domain. The best character...
Species/Host	Rabbit
Reactivity	Human
Conjugation	Unconjugated
Tested Applications	IHC-P
Immunogen	A recombinant partial protein sequence (within amino acids 235-435) from the human protein was used as the immunogen for the Brachyury antibody.
Storage	Aliquot the Brachyury antibody and store frozen at -20°C or colder. Avoid repeated freeze-thaw cycles.
Note	For research use only
Formula	0.2 mg/ml in 1X PBS with 0.1 mg/ml BSA (US sourced), 0.05% sodium azide
Isotype	Rabbit IgG, kappa
Clonality	Recombinant
Uniprot ID	O15178
Hazard Information	This Brachyury antibody is available for research use only.
Dilution Range	Immunohistochemistry (FFPE): 1-2ug/ml for 30 min at RT
Expiration Date	12 months from date of receipt.



IHC staining of FFPE human parathyroid t...



IHC staining of FFPE human chordoma tiss...