
Product Datasheet

**PMS2 Antibody / Post Meiotic Segregation
Increased 2 (orb1823010)**

Description

PMS2 is involved in DNA mismatch repair. It forms



interacts...

Species/Host

Rabbit

Reactivity

Human

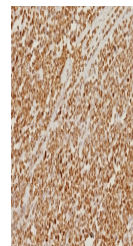
Conjugation

Unconjugated

Tested Applications

IHC-P

IHC staining of FFPE human colon carcino...


Immunogen

A recombinant partial protein sequence (within amino acids 1-200) from the human protein was used as the immunogen for the PMS2 antibody.

Storage

Aliquot the PMS2 antibody and store frozen at -20°C or colder. Avoid repeated freeze-thaw cycles.

Note

For research use only

Formula

0.2 mg/ml in 1X PBS with 0.1 mg/ml BSA (US sourced), 0.05% sodium azide

Isotype

Rabbit IgG, kappa

Clonality

Recombinant

Uniprot ID

P54278

IHC staining of FFPE human colon carcino...

Hazard Information

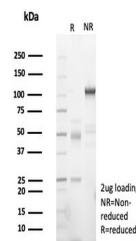
This PMS2 antibody is available for research use only.

Dilution Range

Immunohistochemistry (FFPE): 1-2ug/ml for 30 min at RT

Expiration Date

12 months from date of receipt.



SDS-PAGE analysis of purified, BSA-free ...