
Product Datasheet

**PMS2 Antibody / Post Meiotic Segregation
Increased 2 (orb1823007)**

Description

PMS2 is involved in DNA mismatch repair. It forms



interacts...

Species/Host

Rabbit

Reactivity

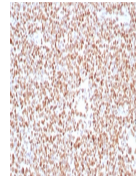
Human

Conjugation

Unconjugated

Tested Applications

IHC-P



IHC staining of FFPE human colon carcino...

Immunogen

A recombinant partial protein sequence (within amino acids 1-200) from the human protein was used as the immunogen for the PMS2 antibody.

Storage

Aliquot the PMS2 antibody and store frozen at -20°C or colder. Avoid repeated freeze-thaw cycles.

Note

For research use only

Formula

0.2 mg/ml in 1X PBS with 0.1 mg/ml BSA (US sourced), 0.05% sodium azide

Isotype

Rabbit IgG, kappa

Clonality

Recombinant

Uniprot ID

P54278

Hazard Information

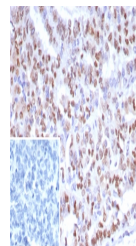
This PMS2 antibody is available for research use only.

Dilution Range

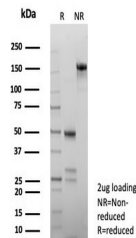
Immunohistochemistry (FFPE): 1-2ug/ml for 30 min at RT

Expiration Date

12 months from date of receipt.



IHC staining of FFPE human ovarian cancer...



SDS-PAGE analysis of purified, BSA-free ...