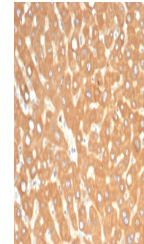


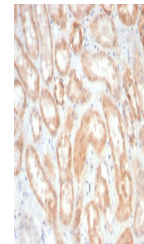
## Product Datasheet

### EPHB4 Antibody / EPH Receptor B4 (orb1822985)

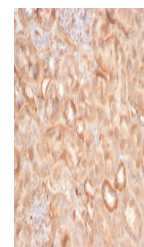
<b>Description</b>	The Eph subfamily represents the largest group of receptor protein tyrosine kinases identified to da...
<b>Species/Host</b>	Mouse
<b>Reactivity</b>	Human
<b>Conjugation</b>	Unconjugated
<b>Tested Applications</b>	IHC-P
<b>Immunogen</b>	A recombinant partial protein sequence (within amino acids 1-200) from the human protein was used as the immunogen for the EPH Receptor B4 antibody.
<b>Storage</b>	Aliquot the EPH Receptor B4 antibody and store frozen at -20°C or colder. Avoid repeated freeze-thaw cycles.
<b>Note</b>	For research use only
<b>Formula</b>	1 mg/ml in 1X PBS; BSA free, sodium azide free
<b>Isotype</b>	Mouse IgG2, kappa
<b>Clonality</b>	Monoclonal
<b>Uniprot ID</b>	<b>P54760</b>
<b>Hazard Information</b>	This EPH Receptor B4 antibody is available for research use only.
<b>Dilution Range</b>	Immunohistochemistry (FFPE): 1-2ug/ml for 30 min at RT
<b>Expiration Date</b>	12 months from date of receipt.



IHC staining of FFPE human liver in colo...



IHC staining of FFPE dog kidney tissue w...



IHC staining of FFPE cat kidney with EPH...