
Product Datasheet

Carboxypeptidase A1 Antibody / CPA1 (orb1822954)

Description

Human pancreatic procarboxypeptidase A exists as


Species/Host

Mouse

Reactivity

Human

Conjugation

Unconjugated

Tested Applications

IHC-P, WB

IHC staining of FFPE human pancreas tiss...

Immunogen

Recombinant full-length human CPA1 protein was used as the immunogen for the Carboxypeptidase A1 antibody.

Storage

Aliquot the Carboxypeptidase A1 antibody and store frozen at -20°C or colder. Avoid repeated freeze-thaw cycles.

Note

For research use only

Formula

0.2 mg/ml in 1X PBS with 0.1 mg/ml BSA (US sourced), 0.05% sodium azide

Isotype

Mouse IgG1, kappa

Clonality

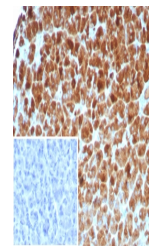
Recombinant

Uniprot ID
P15085
Hazard Information

This Carboxypeptidase A1 antibody is available for research use only.

Dilution Range

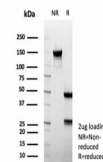
Western blot: 1-2ug/ml, Immunohistochemistry (FFPE): 1-2ug/ml for 30 min at RT



IHC staining of FFPE human pancreas tiss...

Expiration Date

12 months from date of receipt.



SDS-PAGE analysis of purified, BSA-free ...