

Product Datasheet

Carboxypeptidase A1 Antibody / CPA1 (orb1822935)

Description Human pancreatic procarboxypeptidase A exists as three different active forms, two of which are desi...

Species/Host Rabbit

Reactivity Human

Conjugation Unconjugated

Tested Applications IHC-P

Immunogen Recombinant full-length human CPA1 protein was used as the immunogen for the CPA1 antibody.

Storage Aliquot the CPA1 antibody and store frozen at -20°C or colder. Avoid repeated freeze-thaw cycles.

Note For research use only

Formula 0.2 mg/ml in 1X PBS with 0.1 mg/ml BSA (US sourced), 0.05% sodium azide

Isotype Rabbit IgG, kappa

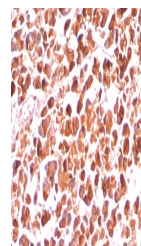
Clonality Recombinant

Uniprot ID **P15085**

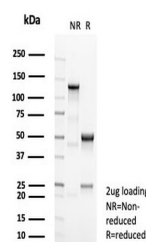
Hazard Information This CPA1 antibody is available for research use only.

Dilution Range Immunohistochemistry (FFPE): 1-2ug/ml for 30 min at RT

Expiration Date 12 months from date of receipt.



IHC staining of FFPE human pancreas tiss...



SDS-PAGE analysis of purified, BSA-free ...