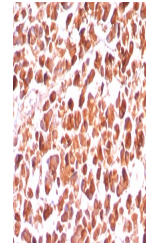


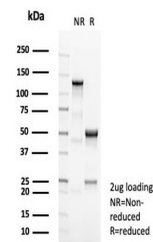
Product Datasheet

Carboxypeptidase A1 Antibody / CPA1 (orb1822934)

Description	Human pancreatic procarboxypeptidase A exists as three different active forms, two of which are desi...
Species/Host	Rabbit
Reactivity	Human
Conjugation	Unconjugated
Tested Applications	IHC-P
Immunogen	Recombinant full-length human CPA1 protein was used as the immunogen for the CPA1 antibody.
Storage	Aliquot the CPA1 antibody and store frozen at -20°C or colder. Avoid repeated freeze-thaw cycles.
Note	For research use only
Formula	1 mg/ml in 1X PBS; BSA free, sodium azide free
Isotype	Rabbit IgG, kappa
Clonality	Recombinant
Uniprot ID	P15085
Hazard Information	This CPA1 antibody is available for research use only.
Dilution Range	Immunohistochemistry (FFPE): 1-2ug/ml for 30 min at RT
Expiration Date	12 months from date of receipt.



IHC staining of FFPE human pancreas tiss...



SDS-PAGE analysis of purified, BSA-free ...