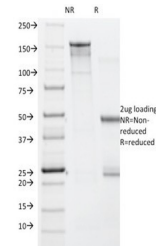


## Product Datasheet

### BRAF V600E Antibody (orb1822925)

<b>Description</b>	The BRAF gene encodes a cytoplasmic serine-threonine kinase, which initiates the activation of the m...
<b>Species/Host</b>	Mouse
<b>Reactivity</b>	Human
<b>Conjugation</b>	Unconjugated
<b>Tested Applications</b>	ELISA
<b>Immunogen</b>	An N-terminal KLH-conjugated peptide (amino acids 596-606, Cys-GLAT(E)KSRWSG) was used as the immunogen for the BRAF V600E antibody.
<b>Storage</b>	Aliquot the BRAF V600E antibody and store frozen at -20°C or colder. Avoid repeated freeze-thaw cycles.
<b>Note</b>	For research use only
<b>Formula</b>	1 mg/ml in 1X PBS; BSA free, sodium azide free
<b>Isotype</b>	Mouse IgG, kappa
<b>Clonality</b>	Monoclonal
<b>Uniprot ID</b>	<b>P15056</b>
<b>Hazard Information</b>	This BRAF V600E antibody is available for research use only.
<b>Dilution Range</b>	ELISA (Order BSA-free format for coating)
<b>Expiration Date</b>	12 months from date of receipt.



SDS-PAGE analysis of purified, BSA-free ...