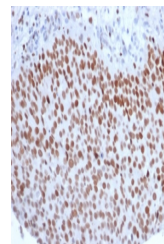


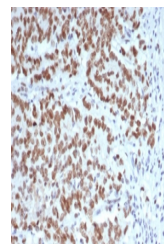
Product Datasheet

EZH2 Antibody (orb1822917)

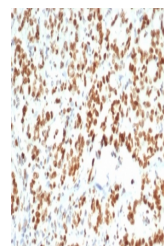
| | |
|----------------------------|--|
| Description | This gene encodes a member of the Polycomb-group (PcG) family. PcG family members form multimeric pr... |
| Species/Host | Mouse |
| Reactivity | Human |
| Conjugation | Unconjugated |
| Tested Applications | IHC-P, WB |
| Immunogen | A recombinant partial protein sequence (within amino acids 300-550) from the human protein was used as the immunogen for the Enhancer of zeste homolog 2 antibody. |
| Storage | Aliquot the EZH2 antibody and store frozen at -20°C or colder. Avoid repeated freeze-thaw cycles. |
| Note | For research use only |
| Formula | 0.2 mg/ml in 1X PBS with 0.1 mg/ml BSA (US sourced), 0.05% sodium azide |
| Isotype | Mouse IgG, kappa |
| Clonality | Monoclonal |
| Uniprot ID | Q15910 |
| Hazard Information | This Enhancer of zeste homolog 2 antibody is available for research use only. |
| Dilution Range | Western blot: 1-2ug/ml, Immunohistochemistry (FFPE): 1-2ug/ml for 30 min at RT |
| Expiration Date | 12 months from date of receipt. |



IHC staining of FFPE human bladder carcinoma tissue.



IHC staining of FFPE human Lynch syndrome tissue.



IHC staining of FFPE human bladder carcinoma tissue.