

---

## Product Datasheet

**DBC1 Antibody / Deleted in breast cancer 1 /  
CCAR2 (orb1822895)**

**Description**

DBC-1 (deleted in breast cancer gene 1 protein),

ap...

**Species/Host**

Mouse

**Reactivity**

Human

**Conjugation**

Unconjugated

**Tested Applications**

FACS, IHC-P

**Immunogen**

Recombinant full-length human CCAR2 / KIAA1967 protein was used as the immunogen for the DBC1 antibody.

**Storage**

Aliquot the DBC1 antibody and store frozen at -20°C or colder. Avoid repeated freeze-thaw cycles.

**Note**

For research use only

**Formula**

1 mg/ml in 1X PBS; BSA free, sodium azide free

**Isotype**

Mouse IgG2a

**Clonality**

Monoclonal

**Uniprot ID**

**Q8N163**

**Hazard Information**

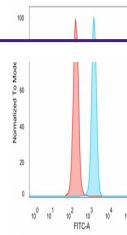
This DBC1 antibody is available for research use only.

**Dilution Range**

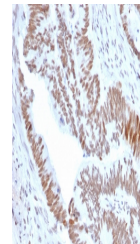
Flow cytometry: 1-2ug/million cells, Immunohistochemistry (FFPE): 1-2ug/ml for 30 min at RT

**Expiration Date**

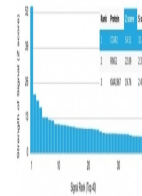
12 months from date of receipt.



Flow cytometry testing of PFA-fixed huma...



IHC staining of FFPE human colon tumor t...



Analysis of a HuProt (TM) microarray con...