
Product Datasheet

**DBC2 Antibody / Deleted in breast cancer gene 2 /
RHOBTB2 (orb1822894)**

Description

The Rho subfamily of Ras-related GTPases

including cytos...

Species/Host

Mouse

Reactivity

Human

Conjugation

Unconjugated

Tested Applications

IHC-P

Immunogen

A recombinant partial protein sequence (within amino acids 554-604) from the human protein was used as the immunogen for the Deleted in breast cancer 2 antibody.

Storage

Aliquot the Deleted in breast cancer 2 antibody and store frozen at -20°C or colder. Avoid repeated freeze-thaw cycles.

Note

For research use only

Formula

0.2 mg/ml in 1X PBS with 0.1 mg/ml BSA (US sourced), 0.05% sodium azide

Isotype

Mouse IgG2, kappa

Clonality

Monoclonal

Uniprot ID
[Q9BYZ6](#)
Hazard Information

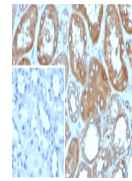
This Deleted in breast cancer 2 antibody is available for research use only.

Dilution Range

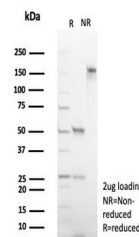
Immunohistochemistry (FFPE): 1-2ug/ml for 30 min at RT

Expiration Date

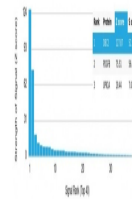
12 months from date of receipt.



IHC staining of FFPE human kidney tissue...



SDS-PAGE analysis of purified, BSA-free ...



Analysis of a HuProt (TM) microarray con...