

---

## Product Datasheet

**DBC2 Antibody / Deleted in breast cancer gene 2 /  
RHOBTB2 (orb1822892)**

**Description**

The Rho subfamily of Ras-related GTPases

including cytos...

**Species/Host**

Mouse

**Reactivity**

Human

**Conjugation**

Unconjugated

**Tested Applications**

IHC-P

**Immunogen**

A recombinant partial protein sequence (within amino acids 554-604) from the human protein was used as the immunogen for the Deleted in breast cancer 2 antibody.

**Storage**

Aliquot the Deleted in breast cancer 2 antibody and store frozen at -20°C or colder. Avoid repeated freeze-thaw cycles.

**Note**

For research use only

**Formula**

1 mg/ml in 1X PBS; BSA free, sodium azide free

**Isotype**

Mouse IgG2, kappa

**Clonality**

Monoclonal

**Uniprot ID**
[Q9BYZ6](#)
**Hazard Information**

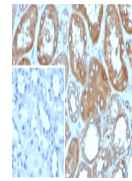
This Deleted in breast cancer 2 antibody is available for research use only.

**Dilution Range**

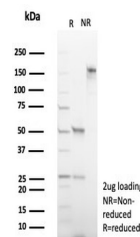
Immunohistochemistry (FFPE): 1-2ug/ml for 30 min at RT

**Expiration Date**

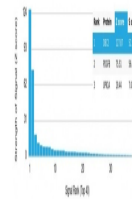
12 months from date of receipt.



IHC staining of FFPE human kidney tissue...



SDS-PAGE analysis of purified, BSA-free ...



Analysis of a HuProt (TM) microarray con...