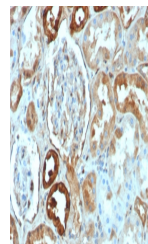


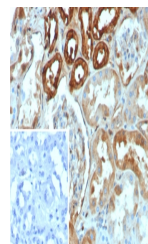
Product Datasheet

Calbindin Antibody / CALB1 (orb1822850)

Description	The family of EF-hand type Ca ²⁺ -binding proteins includes Calbindin D28K, Calbindin D9K, S-100 Alpha...
Species/Host	Mouse
Reactivity	Human
Conjugation	Unconjugated
Tested Applications	IHC-P
Immunogen	A recombinant partial protein sequence (within amino acids 7-96) from the human protein was used as the immunogen for the CALB1 antibody.
Storage	Aliquot the CALB1 antibody and store frozen at -20°C or colder. Avoid repeated freeze-thaw cycles.
Note	For research use only
Formula	1 mg/ml in 1X PBS; BSA free, sodium azide free
Isotype	Mouse IgG1, kappa
Clonality	Recombinant
Uniprot ID	P05937
Hazard Information	This CALB1 antibody is available for research use only.
Dilution Range	Immunohistochemistry (FFPE): 1-2ug/ml for 30 min at RT
Expiration Date	12 months from date of receipt.



IHC staining of FFPE human kidney tissue...



IHC staining of FFPE human kidney tissue...