
Product Datasheet

**TRPS1 Antibody / Tricho-rhino-phalangeal
syndrome type I (orb1822825)**

Description

Transcriptional repressor. Binds specifically to


Species/Host

Rabbit

Reactivity

Human

Conjugation

Unconjugated

Tested Applications

IHC-P

IHC staining of FFPE human breast tissue...

Immunogen

A recombinant partial protein sequence (within amino acids 900-1100) from the human protein was used as the immunogen for the TRPS1 antibody.

Storage

Aliquot the TRPS1 antibody and store frozen at -20°C or colder. Avoid repeated freeze-thaw cycles.

Note

For research use only

Formula

0.2 mg/ml in 1X PBS with 0.1 mg/ml BSA (US sourced), 0.05% sodium azide

Isotype

Rabbit IgG, kappa

Clonality

Recombinant

Uniprot ID

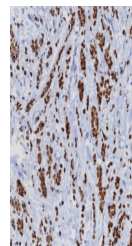
Q9UHF7

Hazard Information

This TRPS1 antibody is available for research use only.

Dilution Range

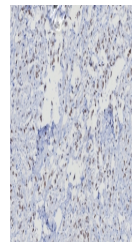
Immunohistochemistry (FFPE): 1-2ug/ml for 30 min at RT



IHC staining of FFPE human mammary gland...

Expiration Date

12 months from date of receipt.



IHC staining of FFPE human uterus. Stron...