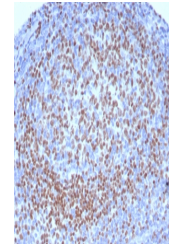


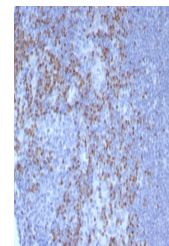
Product Datasheet

PAX5 Antibody (orb1822799)

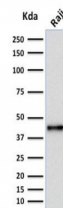
Description	The PAX5 gene is a member of the paired box (PAX) family of transcription factors. The central featu...
Species/Host	Mouse
Reactivity	Human
Conjugation	Unconjugated
Tested Applications	IHC-P, WB
Immunogen	Recombinant full-length human protein was used as the immunogen for the PAX5 antibody.
Storage	Aliquot the PAX5 antibody and store frozen at -20°C or colder. Avoid repeated freeze-thaw cycles.
Note	For research use only
Formula	1 mg/ml in 1X PBS; BSA free, sodium azide free
Isotype	Mouse IgG1, kappa
Clonality	Monoclonal
Uniprot ID	Q02548
Hazard Information	This PAX5 antibody is available for research use only.
Dilution Range	Western blot: 1-2ug/ml, Immunohistochemistry (FFPE): 1-2ug/ml for 30 min at RT
Expiration Date	12 months from date of receipt.



IHC staining of FFPE human tonsil tissue...



IHC staining of FFPE human lymph node ti...



Western blot testing of human Raji cell ...