

## Product Datasheet

# TRP1 / Tyrosinase-Related Protein-1 Antibody (orb1822773)

**Description** It reacts with a 75kDa melanocyte-specific gene product, identified as Tyrosinase-related protein-1 ...

**Species/Host** Rabbit

**Reactivity** Human

**Conjugation** Unconjugated

**Tested Applications** IHC-P

**Immunogen** A recombinant partial protein sequence (within amino acids 200-400) from the human protein was used as the immunogen for the Tyrosinase-Related Protein-1 antibody.

**Storage** Aliquot the Tyrosinase-Related Protein-1 antibody and store frozen at -20°C or colder. Avoid repeated freeze-thaw cycles.

**Note** For research use only

**Formula** 0.2 mg/ml in 1X PBS with 0.1 mg/ml BSA (US sourced), 0.05% sodium azide

**Isotype** Rabbit IgG, kappa

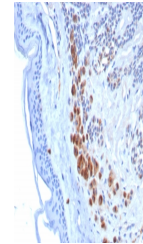
**Clonality** Recombinant

**Uniprot ID** [P17643](#)

**Hazard Information** This Tyrosinase-Related Protein-1 antibody is available for research use only.

**Dilution Range** Immunohistochemistry (FFPE): 1-2ug/ml for 30 min at RT

**Expiration Date** 12 months from date of receipt.



IHC staining of FFPE human melanoma tiss...

