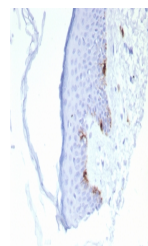


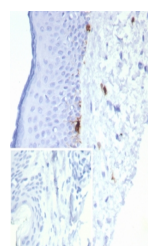
Product Datasheet

MART-1 / Melan-A Antibody (orb1822768)

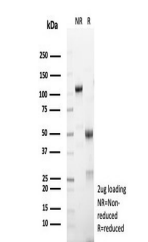
| | |
|----------------------------|---|
| Description | This antibody recognizes a protein doublet of 20-22kDa, identified as MART-1 (Melanoma Antigen Recog... |
| Species/Host | Mouse |
| Reactivity | Human |
| Conjugation | Unconjugated |
| Tested Applications | IHC-P |
| Immunogen | Recombinant full-length human protein was used as the immunogen for the MART-1 antibody. |
| Storage | Aliquot the MART-1 antibody and store frozen at -20°C or colder. Avoid repeated freeze-thaw cycles. |
| Note | For research use only |
| Formula | 0.2 mg/ml in 1X PBS with 0.1 mg/ml BSA (US sourced), 0.05% sodium azide |
| Isotype | Mouse IgG1, kappa |
| Clonality | Recombinant |
| Uniprot ID | Q16655 |
| Hazard Information | This MART-1 antibody is available for research use only. |
| Dilution Range | Immunohistochemistry (FFPE): 1-2ug/ml for 30 min at RT |
| Expiration Date | 12 months from date of receipt. |



IHC staining of FFPE human skin tissue w...



IHC staining of FFPE human skin tissue w...



SDS-PAGE analysis of purified, BSA-free ...