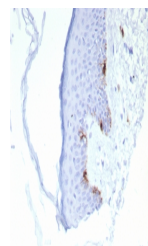


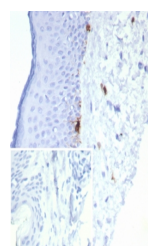
Product Datasheet

MART-1 / Melan-A Antibody (orb1822767)

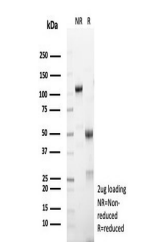
Description	This antibody recognizes a protein doublet of 20-22kDa, identified as MART-1 (Melanoma Antigen Recog...
Species/Host	Mouse
Reactivity	Human
Conjugation	Unconjugated
Tested Applications	IHC-P
Immunogen	Recombinant full-length human protein was used as the immunogen for the MART-1 antibody.
Storage	Aliquot the MART-1 antibody and store frozen at -20°C or colder. Avoid repeated freeze-thaw cycles.
Note	For research use only
Formula	0.2 mg/ml in 1X PBS with 0.1 mg/ml BSA (US sourced), 0.05% sodium azide
Isotype	Mouse IgG1, kappa
Clonality	Recombinant
Uniprot ID	Q16655
Hazard Information	This MART-1 antibody is available for research use only.
Dilution Range	Immunohistochemistry (FFPE): 1-2ug/ml for 30 min at RT
Expiration Date	12 months from date of receipt.



IHC staining of FFPE human skin tissue w...



IHC staining of FFPE human skin tissue w...



SDS-PAGE analysis of purified, BSA-free ...