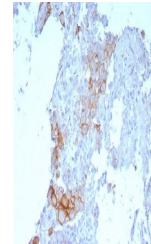


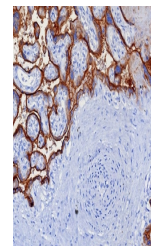
Product Datasheet

PD-L1 Antibody / B7-H1 / CD274 (orb1822758)

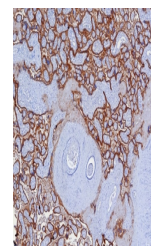
Description	PD-L1 plays a critical role in induction and maintenance of immune tolerance to self. [UniProt]
Species/Host	Rabbit
Reactivity	Human
Conjugation	Unconjugated
Tested Applications	IHC-P
Immunogen	A recombinant partial protein sequence (within amino acids 190-290) from the human protein was used as the immunogen for the Programmed cell death 1 ligand 1 antibody.
Storage	Aliquot the Programmed cell death 1 ligand 1 antibody and store frozen at -20°C or colder. Avoid repeated freeze-thaw cycles.
Note	For research use only
Formula	0.2 mg/ml in 1X PBS with 0.1 mg/ml BSA (US sourced), 0.05% sodium azide
Isotype	Rabbit IgG, kappa
Clonality	Recombinant
Uniprot ID	Q9NZQ7
Hazard Information	This Programmed cell death 1 ligand 1 antibody is available for research use only.
Dilution Range	Immunohistochemistry (FFPE): 1-2ug/ml for 30 min at RT
Expiration Date	12 months from date of receipt.



IHC staining of FFPE human lung SqCC wit...



IHC staining of FFPE human placental tis...



IHC staining of FFPE human placental tis...