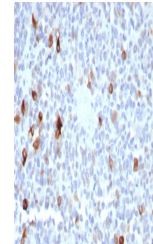


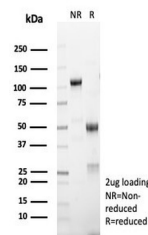
Product Datasheet

MART-1 / Melan-A Antibody (orb1822749)

Description	This antibody recognizes a protein doublet of 20-22kDa, identified as MART-1 (Melanoma Antigen Recog...
Species/Host	Rabbit
Reactivity	Human
Conjugation	Unconjugated
Tested Applications	IHC-P
Immunogen	A recombinant fragment corresponding to the N-terminus of human Melan A protein was used as the immunogen for the Melan-A antibody.
Storage	Aliquot the Melan-A antibody and store frozen at -20°C or colder. Avoid repeated freeze-thaw cycles.
Note	For research use only
Formula	0.2 mg/ml in 1X PBS with 0.1 mg/ml BSA (US sourced), 0.05% sodium azide
Isotype	Rabbit IgG, kappa
Clonality	Recombinant
Uniprot ID	Q16655
Hazard Information	This Melan-A antibody is available for research use only.
Dilution Range	Immunohistochemistry (FFPE): 1-2ug/ml for 30 min at RT
Expiration Date	12 months from date of receipt.



IHC staining of FFPE human melanoma tiss...



SDS-PAGE analysis of purified, BSA-free ...