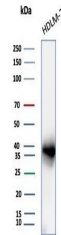


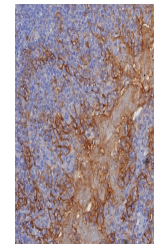
Product Datasheet

PD-L1 Antibody / B7-H1 / CD274 (orb1822745)

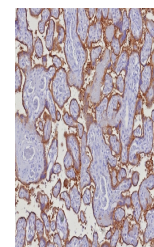
| | |
|----------------------------|--|
| Description | PD-L1 is a checkpoint regulator in immune cells, it is expressed on immune or non-hematopoietic cell... |
| Species/Host | Rabbit |
| Reactivity | Human |
| Conjugation | Unconjugated |
| Tested Applications | IHC-P, WB |
| Immunogen | A recombinant partial protein sequence (within amino acids 190-290) from the human protein was used as the immunogen for the PD-L1 antibody. |
| Storage | Aliquot the PD-L1 antibody and store frozen at -20°C or colder. Avoid repeated freeze-thaw cycles. |
| Note | For research use only |
| Formula | 1 mg/ml in 1X PBS; BSA free, sodium azide free |
| Isotype | Rabbit IgG, kappa |
| Clonality | Recombinant |
| Uniprot ID | Q9NZQ7 |
| Hazard Information | This PD-L1 antibody is available for research use only. |
| Dilution Range | Western blot: 1-2ug/ml, Immunohistochemistry (FFPE): 1-2ug/ml for 30 min at RT |
| Expiration Date | 12 months from date of receipt. |



Western blot testing of human HDLM-2 cel...



IHC staining of FFPE human tonsil tissue...



IHC staining of FFPE human placental tis...