

Product Datasheet

Pan-Cadherin Antibody (orb1822675)

Description Cadherins comprise a family of Ca²⁺-dependent adhesion molecules that function to mediate cell-cell ...

Species/Host Mouse

Reactivity Human

Conjugation Unconjugated

Tested Applications IHC-P

Immunogen A recombinant fragment of human C-terminal of Pan-Cadherin was used as the immunogen for the Pan-Cadherin antibody.

Storage Aliquot the Pan-Cadherin antibody and store frozen at -20°C or colder. Avoid repeated freeze-thaw cycles.

Note For research use only

Formula 0.2 mg/ml in 1X PBS with 0.1 mg/ml BSA (US sourced), 0.05% sodium azide

Isotype Mouse IgG1, kappa

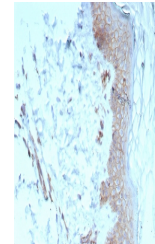
Clonality Monoclonal

Uniprot ID [P33151](#), [P12830](#), [P22223](#), [P55283](#), [P19022](#)

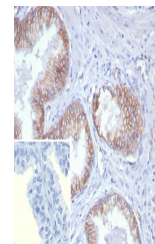
Hazard Information This Pan-Cadherin antibody is available for research use only.

Dilution Range Immunohistochemistry (FFPE): 1-2ug/ml for 30 min at RT

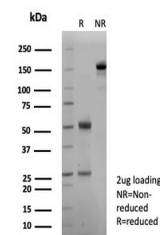
Expiration Date 12 months from date of receipt.



IHC staining of FFPE human skin tissue w...



IHC staining of FFPE human prostate carc...



SDS-PAGE analysis of purified, BSA-free ...