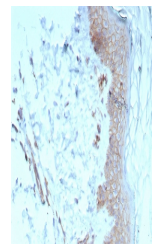


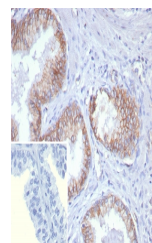
Product Datasheet

Pan-Cadherin Antibody (orb1822674)

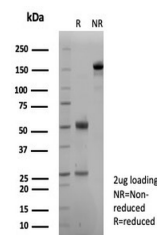
Description	Cadherins comprise a family of Ca ²⁺ -dependent adhesion molecules that function to mediate cell-cell ...
Species/Host	Mouse
Reactivity	Human
Conjugation	Unconjugated
Tested Applications	IHC-P
Immunogen	A recombinant fragment of human C-terminal of Pan-Cadherin was used as the immunogen for the Pan-Cadherin antibody.
Storage	Aliquot the Pan-Cadherin antibody and store frozen at -20°C or colder. Avoid repeated freeze-thaw cycles.
Note	For research use only
Formula	0.2 mg/ml in 1X PBS with 0.1 mg/ml BSA (US sourced), 0.05% sodium azide
Isotype	Mouse IgG1, kappa
Clonality	Monoclonal
Uniprot ID	P33151, P12830, P22223, P55283, P19022
Hazard Information	This Pan-Cadherin antibody is available for research use only.
Dilution Range	Immunohistochemistry (FFPE): 1-2ug/ml for 30 min at RT
Expiration Date	12 months from date of receipt.



IHC staining of FFPE human skin tissue w...



IHC staining of FFPE human prostate carc...



SDS-PAGE analysis of purified, BSA-free ...