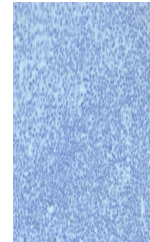


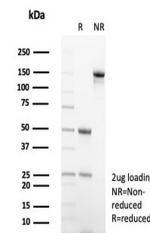
## Product Datasheet

# Mouse IgG2a Isotype Control Antibody (orb1822666)

<b>Description</b>	To serve as a true negative control for various procedures, this rabbit monoclonal IgG should be use...
<b>Species/Host</b>	Mouse
<b>Conjugation</b>	Unconjugated
<b>Tested Applications</b>	ELISA, FACS, IF, IHC-P, WB
<b>Immunogen</b>	Recombinant full-length human IG1R protein was used as the immunogen for the Mouse IgG2a Isotype Control antibody.
<b>Storage</b>	Aliquot the Mouse IgG2a Isotype Control antibody and store frozen at -20°C or colder. Avoid repeated freeze-thaw cycles.
<b>Note</b>	For research use only
<b>Formula</b>	0.2 mg/ml in 1X PBS with 0.1 mg/ml BSA (US sourced), 0.05% sodium azide
<b>Isotype</b>	Mouse IgG2a
<b>Clonality</b>	Monoclonal
<b>Hazard Information</b>	This Mouse IgG2a Isotype Control antibody is available for research use only.
<b>Dilution Range</b>	ELISA: assay dependent, Flow Cytometry: assay dependent, Immunofluorescence: assay dependent, Western blot: assay dependent, Immunohistochemistry (FFPE): assay dependent
<b>Expiration Date</b>	12 months from date of receipt.



IHC staining of FFPE human tonsil tissue...



SDS-PAGE analysis of purified, BSA-free ...