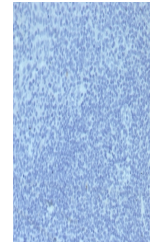


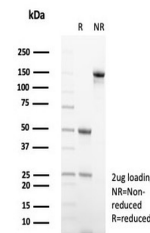
Product Datasheet

Mouse IgG2a Isotype Control Antibody (orb1822665)

| | |
|----------------------------|---|
| Description | To serve as a true negative control for various procedures, this rabbit monoclonal IgG should be use... |
| Species/Host | Mouse |
| Conjugation | Unconjugated |
| Tested Applications | ELISA, FACS, IF, IHC-P, WB |
| Immunogen | Recombinant full-length human IG1R protein was used as the immunogen for the Mouse IgG2a Isotype Control antibody. |
| Storage | Aliquot the Mouse IgG2a Isotype Control antibody and store frozen at -20°C or colder. Avoid repeated freeze-thaw cycles. |
| Note | For research use only |
| Formula | 0.2 mg/ml in 1X PBS with 0.1 mg/ml BSA (US sourced), 0.05% sodium azide |
| Isotype | Mouse IgG2a |
| Clonality | Monoclonal |
| Hazard Information | This Mouse IgG2a Isotype Control antibody is available for research use only. |
| Dilution Range | ELISA: assay dependent, Flow Cytometry: assay dependent, Immunofluorescence: assay dependent, Western blot: assay dependent, Immunohistochemistry (FFPE): assay dependent |
| Expiration Date | 12 months from date of receipt. |



IHC staining of FFPE human tonsil tissue...



SDS-PAGE analysis of purified, BSA-free ...