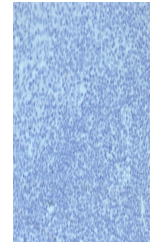


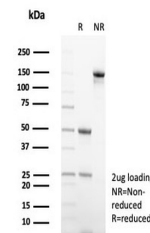
Product Datasheet

Mouse IgG2a Isotype Control Antibody (orb1822664)

Description	To serve as a true negative control for various procedures, this rabbit monoclonal IgG should be use...
Species/Host	Mouse
Conjugation	Unconjugated
Tested Applications	ELISA, FACS, IF, IHC-P, WB
Immunogen	Recombinant full-length human IG1R protein was used as the immunogen for the Mouse IgG2a Isotype Control antibody.
Storage	Aliquot the Mouse IgG2a Isotype Control antibody and store frozen at -20°C or colder. Avoid repeated freeze-thaw cycles.
Note	For research use only
Formula	1 mg/ml in 1X PBS; BSA free, sodium azide free
Isotype	Mouse IgG2a
Clonality	Monoclonal
Hazard Information	This Mouse IgG2a Isotype Control antibody is available for research use only.
Dilution Range	ELISA: assay dependent, Flow Cytometry: assay dependent, Immunofluorescence: assay dependent, Western blot: assay dependent, Immunohistochemistry (FFPE): assay dependent
Expiration Date	12 months from date of receipt.



IHC staining of FFPE human tonsil tissue...



SDS-PAGE analysis of purified, BSA-free ...