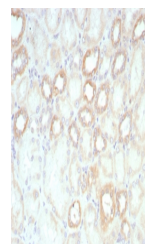


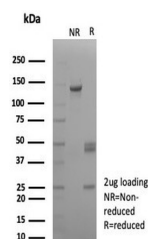
Product Datasheet

Biotin / Vitamin B7 / Vitamin H Antibody (orb1822660)

| | |
|----------------------------|---|
| Description | It recognizes both the free and protein-conjugated (either soluble or cell bound) form of biotin. Th... |
| Species/Host | Mouse |
| Reactivity | All |
| Conjugation | Unconjugated |
| Tested Applications | FACS, IF, IHC-P, WB |
| Immunogen | Biotinylated sheep immunoglobulin was used as the immunogen for the Biotin antibody. |
| Storage | Aliquot the Biotin antibody and store frozen at -20°C or colder. Avoid repeated freeze-thaw cycles. |
| Note | For research use only |
| Formula | 0.2 mg/ml in 1X PBS with 0.1 mg/ml BSA (US sourced), 0.05% sodium azide |
| Isotype | Mouse IgG1, kappa |
| Clonality | Recombinant |
| Hazard Information | This Biotin antibody is available for research use only. |
| Dilution Range | Flow cytometry: 0.5-1ug/million cells, Immunofluorescence: 0.5-1ug/ml, Western blot: 0.5-2ug/ml, Immunohistochemistry (FFPE): 0.5-1ug/ml for 30 minutes at RT |
| Expiration Date | 12 months from date of receipt. |



IHC staining of FFPE human kidney tissue...



SDS-PAGE analysis of purified, BSA-free ...