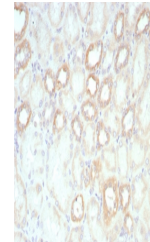


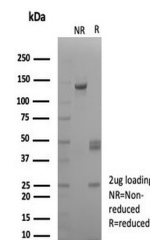
Product Datasheet

Biotin / Vitamin B7 / Vitamin H Antibody (orb1822659)

Description	It recognizes both the free and protein-conjugated (either soluble or cell bound) form of biotin. Th...
Species/Host	Mouse
Reactivity	All
Conjugation	Unconjugated
Tested Applications	FACS, IF, IHC-P, WB
Immunogen	Biotinylated sheep immunoglobulin was used as the immunogen for the Biotin antibody.
Storage	Aliquot the Biotin antibody and store frozen at -20°C or colder. Avoid repeated freeze-thaw cycles.
Note	For research use only
Formula	0.2 mg/ml in 1X PBS with 0.1 mg/ml BSA (US sourced), 0.05% sodium azide
Isotype	Mouse IgG1, kappa
Clonality	Recombinant
Hazard Information	This Biotin antibody is available for research use only.
Dilution Range	Flow cytometry: 0.5-1ug/million cells, Immunofluorescence: 0.5-1ug/ml, Western blot: 0.5-2ug/ml, Immunohistochemistry (FFPE): 0.5-1ug/ml for 30 minutes at RT
Expiration Date	12 months from date of receipt.



IHC staining of FFPE human kidney tissue...



SDS-PAGE analysis of purified, BSA-free ...