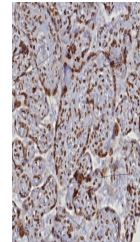


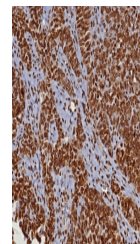
Product Datasheet

dsDNA Antibody / Double Stranded DNA (orb1822657)

Description	This mAb recognizes the double stranded DNA in human cells. It can be used to stain the nuclei in ce...
Species/Host	Rabbit
Reactivity	Human
Conjugation	Unconjugated
Tested Applications	IHC-P
Immunogen	Burkitt's cell nuclei were used as the immunogen for the dsDNA antibody.
Storage	Aliquot the dsDNA antibody and store frozen at -20°C or colder. Avoid repeated freeze-thaw cycles.
Note	For research use only
Formula	0.2 mg/ml in 1X PBS with 0.1 mg/ml BSA (US sourced), 0.05% sodium azide
Isotype	Rabbit IgG, kappa
Clonality	Recombinant
Hazard Information	This dsDNA antibody is available for research use only.
Dilution Range	Immunohistochemistry (FFPE): 1-2ug/ml for 30 min at RT
Expiration Date	12 months from date of receipt.



IHC staining of FFPE human placental tis...



IHC staining of FFPE human ovarian cance...