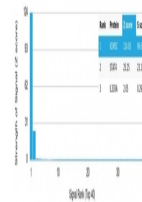


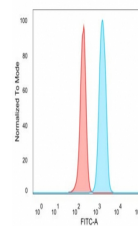
Product Datasheet

KDM5C Antibody / JARID1C / SMCX (orb1822645)

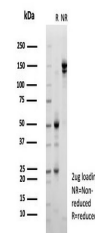
Description	SmcX, also known as JARID1C (jumonji, AT rich interactive domain 1C), MRXJ, KDM5C or XE169, is a nuc...
Species/Host	Mouse
Reactivity	Human
Conjugation	Unconjugated
Tested Applications	FACS
Immunogen	Recombinant full-length human protein was used as the immunogen for the JARID1C antibody.
Storage	Aliquot the JARID1C antibody and store frozen at -20°C or colder. Avoid repeated freeze-thaw cycles.
Note	For research use only
Formula	0.2 mg/ml in 1X PBS with 0.1 mg/ml BSA (US sourced), 0.05% sodium azide
Isotype	Mouse IgG2c
Clonality	Monoclonal
Uniprot ID	P41229
Hazard Information	This JARID1C antibody is available for research use only.
Dilution Range	Flow cytometry: 1-2ug/million cells
Expiration Date	12 months from date of receipt.



Analysis of a HuProt (TM) microarray con...



Flow cytometry testing of PFA-fixed huma...



SDS-PAGE analysis of purified, BSA-free ...