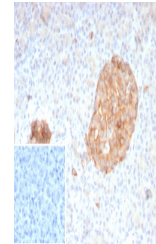


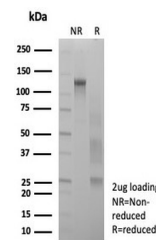
Product Datasheet

Synaptophysin Antibody (orb1822630)

Description	This recombinant mouse monoclonal antibody recognizes a protein of 38kDa that is identified as synap...
Species/Host	Mouse
Reactivity	Human
Conjugation	Unconjugated
Tested Applications	IHC-P
Immunogen	A recombinant partial protein sequence (within amino acids 224-313) from the human protein was used as the immunogen for the SYP antibody.
Storage	Aliquot the SYP antibody and store frozen at -20°C or colder. Avoid repeated freeze-thaw cycles.
Note	For research use only
Formula	0.2 mg/ml in 1X PBS with 0.1 mg/ml BSA (US sourced), 0.05% sodium azide
Isotype	Mouse IgG2b, kappa
Clonality	Recombinant
Uniprot ID	P08247
Hazard Information	This SYP antibody is available for research use only.
Dilution Range	Immunohistochemistry (FFPE): 1-2ug/ml for 30 min at RT
Expiration Date	12 months from date of receipt.



IHC staining of FFPE human pancreas tiss...



SDS-PAGE analysis of purified, BSA-free ...