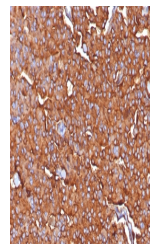


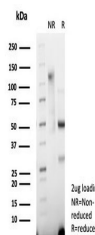
Product Datasheet

Synaptophysin Antibody (orb1822615)

Description	This recombinant rabbit monoclonal antibody recognizes a protein of 38kDa that is identified as syna...
Species/Host	Rabbit
Reactivity	Human
Conjugation	Unconjugated
Tested Applications	IHC-P
Immunogen	A recombinant partial protein sequence (within amino acids 274-313) from the human protein was used as the immunogen for the Synaptophysin antibody.
Storage	Aliquot the Synaptophysin antibody and store frozen at -20°C or colder. Avoid repeated freeze-thaw cycles.
Note	For research use only
Formula	0.2 mg/ml in 1X PBS with 0.1 mg/ml BSA (US sourced), 0.05% sodium azide
Isotype	Rabbit IgG, kappa
Clonality	Recombinant
Uniprot ID	P08247
Hazard Information	This Synaptophysin antibody is available for research use only.
Dilution Range	Immunohistochemistry (FFPE): 1-2ug/ml for 30 min at RT
Expiration Date	12 months from date of receipt.



IHC staining of FFPE human adrenal tissue...



SDS-PAGE analysis of purified, BSA-free ...