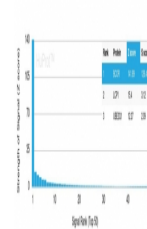


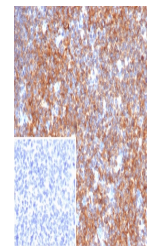
Product Datasheet

BCOR Antibody / BCL-6 corepressor (orb1822605)

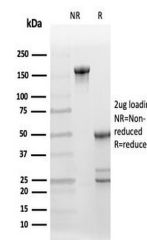
| | |
|----------------------------|----------------------------------------------------------------------------------------------------------------------------------------------------------|
| Description | Bcl-6, a transcriptional repressor, can promote or inhibit apoptosis depending on the cell type and ... |
| Species/Host | Mouse |
| Reactivity | Human |
| Conjugation | Unconjugated |
| Tested Applications | IHC-P |
| Immunogen | A recombinant partial protein sequence (within amino acids 100-400) from the human protein was used as the immunogen for the BCL-6 corepressor antibody. |
| Storage | Aliquot the BCL-6°Corepressor antibody and store frozen at -20°C or colder. Avoid repeated freeze-thaw cycles. |
| Note | For research use only |
| Formula | 0.2 mg/ml in 1X PBS with 0.1 mg/ml BSA (US sourced), 0.05% sodium azide |
| Isotype | Mouse IgG1, kappa |
| Clonality | Monoclonal |
| Uniprot ID | Q6W2J9 |
| Hazard Information | This BCL-6 corepressor antibody is available for research use only. |
| Dilution Range | Immunohistochemistry (FFPE): 1-2ug/ml for 30 min at RT |
| Expiration Date | 12 months from date of receipt. |



Analysis of a HuProt (TM) microarray con...



IHC staining of FFPE human tonsil tissue...



SDS-PAGE analysis of purified, BSA-free ...