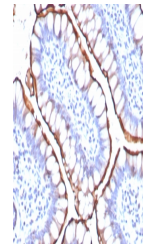


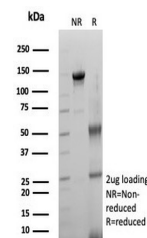
Product Datasheet

ACE2 Antibody / Angiotensin-Converting Enzyme 2 (orb1822585)

Description	Carboxypeptidase which converts angiotensin I to angiotensin 1-9, a peptide of unknown function, and...
Species/Host	Rabbit
Reactivity	Human
Conjugation	Unconjugated
Tested Applications	ELISA, IHC-P
Immunogen	A recombinant partial protein sequence (within amino acids 705-805) from the human protein was used as the immunogen for the Angiotensin Converting Enzyme 2 antibody.
Storage	Aliquot the Angiotensin Converting Enzyme 2 antibody and store frozen at -20°C or colder. Avoid repeated freeze-thaw cycles.
Note	For research use only
Formula	0.2 mg/ml in 1X PBS with 0.1 mg/ml BSA (US sourced), 0.05% sodium azide
Isotype	Rabbit IgG, kappa
Clonality	Recombinant
Uniprot ID	Q9BYF1
Hazard Information	This Angiotensin Converting Enzyme 2 antibody is available for research use only.
Dilution Range	ELISA (Order BSA-free format for coating), Immunohistochemistry (FFPE): 1-2ug/ml for 30 min at RT
Expiration Date	12 months from date of receipt.



IHC staining of FFPE human small intesti...



SDS-PAGE analysis of purified, BSA-free ...