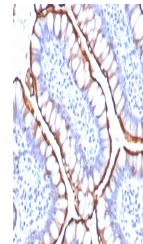


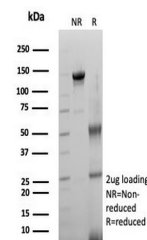
## Product Datasheet

# ACE2 Antibody / Angiotensin-Converting Enzyme 2 (orb1822584)

|                            |  |
|----------------------------|--|
| <b>Description</b>         | Carboxypeptidase which converts angiotensin I to angiotensin 1-9, a peptide of unknown function, and...  |
| <b>Species/Host</b>        | Rabbit   |
| <b>Reactivity</b>          | Human  |
| <b>Conjugation</b>         | Unconjugated   |
| <b>Tested Applications</b> | ELISA, IHC-P   |
| <b>Immunogen</b>           | A recombinant partial protein sequence (within amino acids 705-805) from the human protein was used as the immunogen for the Angiotensin Converting Enzyme 2 antibody. |
| <b>Storage</b>             | Aliquot the Angiotensin Converting Enzyme 2 antibody and store frozen at -20°C or colder. Avoid repeated freeze-thaw cycles.   |
| <b>Note</b>                | For research use only  |
| <b>Formula</b>             | 0.2 mg/ml in 1X PBS with 0.1 mg/ml BSA (US sourced), 0.05% sodium azide  |
| <b>Isotype</b>             | Rabbit IgG, kappa  |
| <b>Clonality</b>           | Recombinant  |
| <b>Uniprot ID</b>          | <a href="#">Q9BYF1</a>   |
| <b>Hazard Information</b>  | This Angiotensin Converting Enzyme 2 antibody is available for research use only.  |
| <b>Dilution Range</b>      | ELISA (Order BSA-free format for coating), Immunohistochemistry (FFPE): 1-2ug/ml for 30 min at RT  |
| <b>Expiration Date</b>     | 12 months from date of receipt.  |



IHC staining of FFPE human small intesti...



SDS-PAGE analysis of purified, BSA-free ...