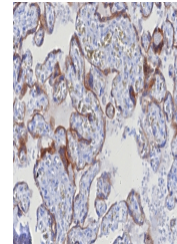


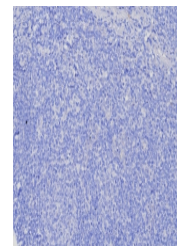
Product Datasheet

Glypican 3 Antibody / GPC3 (orb1822534)

Description	Glypican-3 (GPC3) is a glycosylphosphatidyl inositol-anchored membrane protein, which may also be fou...
Species/Host	Rabbit
Reactivity	Human
Conjugation	Unconjugated
Tested Applications	IHC-P
Immunogen	A recombinant partial protein sequence (within amino acids 400-550) from the human protein was used as the immunogen for the GPC3 antibody.
Storage	Aliquot the GPC3 antibody and store frozen at -20°C or colder. Avoid repeated freeze-thaw cycles.
Note	For research use only
Formula	0.2 mg/ml in 1X PBS with 0.1 mg/ml BSA (US sourced), 0.05% sodium azide
Isotype	Rabbit IgG, kappa
Clonality	Recombinant
Uniprot ID	P51654
Hazard Information	This GPC3 antibody is available for research use only.
Dilution Range	Immunohistochemistry (FFPE): 1-2ug/ml for 30 min at RT
Expiration Date	12 months from date of receipt.



IHC staining of FFPE human hepatocellular carcinoma tissue.



Negative control: IHC testing of FFPE human hepatocellular carcinoma tissue.